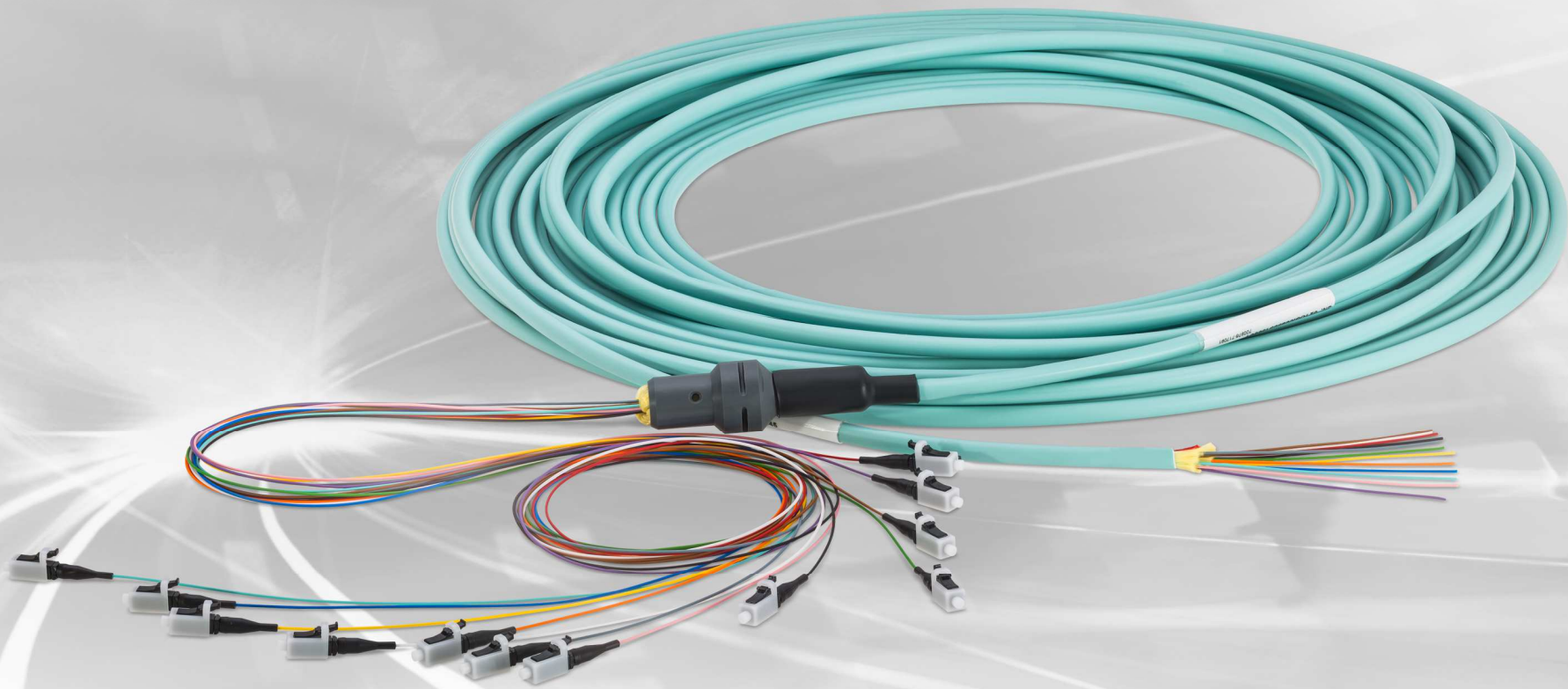
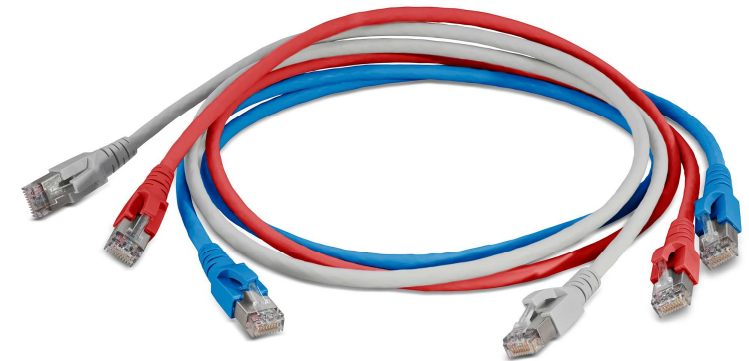


PerCONNECT®

PRODUCT INFORMATION

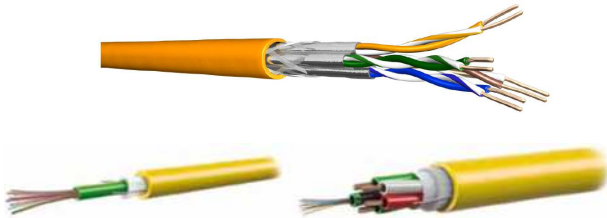


Contents:	Page
Applications	3 - 4
Cable types	5 - 6
Splice panels	7
Splice units	8
Splice accessories	9
Distribution solution	10 - 11
MTP® Application	12
Accessories	13 - 15
Racks & Cabinets	16 - 18
Copper solution	19 - 22



PerCONNECT® CABLING SOLUTION

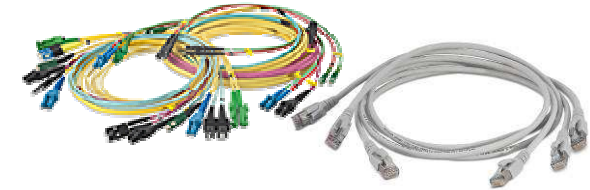
Fiber optic and Copper installation cables



19" Copper-Panels



Patchcords
Fiber optic and Copper



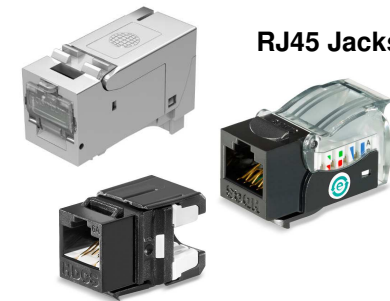
19" 1 HU Splice- and distribution panels
fixed installation



PerCONNECT®
Trunk cable, preassembled on one side



RJ45 Jacks



Accessories



Highly modular SMAP-G2 19"
Distribution Panel
with MTP®-Modules



PerCONNECT® CABLING SOLUTION

Applications:

Cabling Solution for cabling buildings and offices

- Time-saving, cost-effective LAN cabling with single-sided pre-assembly
- Focused on the useful and necessary

System description:

Our PerCONNECT® Cabling Solution consists of:

- On one side factory assembled FO loose tube cables up to 48 fibers, with „standard stepped“ connector legs
- Therefore, explicitly developed 19” Panel systems: as splice- and distribution variant
- A large variety of fiber optic installation cables, patchcords and accessories
- Copper installation cables, patchcords
- Wall-mounted and distributor cabinets: as splice- and distribution variant
- Central and floor distributor

Properties:

End-to-end, fully harmonized cabling system for cabling buildings and offices

- Up to 20% cost and time savings at the installation site using pre-assembled products on one side
- Gel-free cables make fiber cleaning at site with splicing redundant and allow more efficient working
- Reduced-diameter optical fiber cables reduce fire load at minimum 15% and guarantee forward-looking subsequent installation thanks to free capacities in cable channels
- Cables are available in various fire protection classes (CPR)
- Indoor cables for permanent installation are available from stock in class B2 – currently the highest available fire protection class



PerCONNECT® CABLING SOLUTION

Cable types

Fiber optic indoor cable

Type: I-B(ZN)BH XXXX/125µm JF (Jelly free) Outer jacket: FRNC-LSZH with non-metallic rodent protection CPR: B2ca	12 Fibers OS2	024A0014G657A1
	24 Fibers OS2	024A0012G657A1
	12 Fibers OM3	024A0015OM3BI
	24 Fibers OM3	024A0013OM3BI
	12 Fibers OM4	024A0015OM4BI
	24 Fibers OM4	024A0013OM4BI



Fiber optic indoor cable

Type: I-F(ZN)H XXXX/125µm Outer jacket: FRNC-LSZH 3mm	12 Fibers OS2	037A0004G657A1
	24 Fibers OS2	037A0016G657A1
	12 Fibers OM3	037A0001OM3BI
	24 Fibers OM3	037A0004OM3BI
	12 Fibers OM4	037A0001OM4BI
	24 Fibers OM4	037A0004OM4BI



Fiber optic indoor cable

Type: I-F(ZN)H(ZN)H XXXX/125µm Outer jacket: FRNC-LSZH 3/4,5m CPR: Dca	12 Fibers OS2	037A0005G657A1
	12 Fibers OM3	037A0002OM3BI
	12 Fibers OM4	037A0002OM4BI

PerCONNECT® CABLING SOLUTION

Cable types

Fiber optic installation cable Universal cable

Type: U-DQ(ZN)BH XX XX/125µm
Outer jacket: FR-LSZH with rodent protection

12 Fibers OS2
24 Fibers OS2
48 Fibers OS2

030A0010G657A1
030A0016G657A1
030A0025G657A1

12 Fibers OM3
24 Fibers OM3
48 Fibers OM3

030A0110OM3BI
030A0116OM3BI
030A0125OM3BI

12 Fibers OM4
24 Fibers OM4
48 Fibers OM4

030A0110OM4BI
030A0116OM4BI
030A0125OM4BI



Fiber optic installation cable Outdoor cable

Type: A-DQ(ZN)B2Y XX XX/125µm
Outer jacket: PE with rodent protection

12 Fibers OS2
24 Fibers OS2
48 Fibers OS2

010A0010
010A0016
010A0025

12 Fibers OM3
24 Fibers OM3

010A0110OM3BI
010A0116OM3BI

12 Fibers OM4
24 Fibers OM4

010A0110OM4BI
010A0116OM4BI



PerCONNECT® CABLING SOLUTION

Splice panels:

19"-Splice panels 1 HU LC-Duplex

RAL 7035, fixed installation
Body: aluminum

with factory-assembled splice cassettes,
pigtail bundle cable and FO-adapters

12 Fibers OS2
24 Fibers OS2
48 Fibers OS2

12 Fibers OM3
24 Fibers OM3
48 Fibers OM3

12 Fibers OM4
24 Fibers OM4
48 Fibers OM4

231L0353
231L0355
231L0358

231L1323OM3
231L1325OM3
231L1328OM3

231L1323OM4
231L1325OM4
231L1328OM4

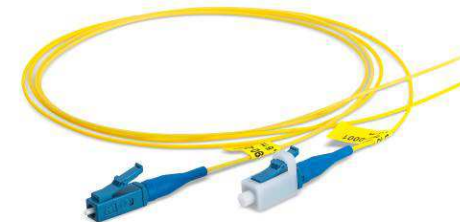


FO-pigtail

Connector system: LC
Cable type: I-VH 1 X/125µm,
Compact strand
Length: 2 m

9µm OS2
50µm OM3
50µm OM4

087L1743
087L1744OM3
087L1744OM4



Factory-assembled splice cassettes

with 12 fibers X/125µm, pigtail bundle cable
Connector system: LC-Simplex
Length: 2 m
without splice accessories

12 Fibers OS2
12 Fibers OM3
12 Fibers OM4

117L7000G657A1
117L7001OM3
117L7001OM4



PerCONNECT® CABLING SOLUTION

Splice units:

Wall splice case for up to 48 fibers

Connector system: LCD	12 Fibers OS2	116L3153
Material and color: steel, RAL 7035	24 Fibers OS2	116L3155
Dimensions: 300 x 300 x 85 mm	48 Fibers OS2	116L3158
incl. mounting plates for cable glands (PG 13,5/16)	12 Fibers OM3	116L3163OM3
incl. splice cassettes	24 Fibers OM3	116L3165OM3
	48 Fibers OM3	116L3168OM3
	12 Fibers OM4	116L3163OM4
	24 Fibers OM4	116L3165OM4
	48 Fibers OM4	116L3168OM4



Universal box 360x254x111mm

Splice box with inside patch field	24 Fibers OS2	118L4302
Connector system: LCD/LCD	48 Fibers OS2	118L4303
Material and color: plastic, RAL 7035 light gray	24 Fibers OM3	118L4304OM3
	48 Fibers OM3	118L4305OM3
	24 Fibers OM4	118L4304OM4
	48 Fibers OM4	118L4305OM4



Mini-Universal splice box

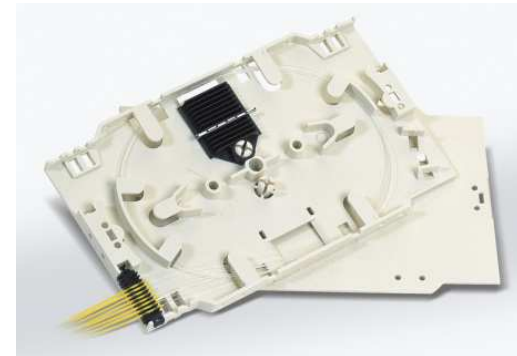
Connector system: LC-Duplex	12 Fibers OS2	114L0681
incl. splice cassettes and pigtailed	12 Fibers OM3	114L0782OM3
without , splice holders, splice protectors	12 Fibers OM4	114L0782OM4
Plastic, RAL 7035 light gray		



PerCONNECT® CABLING SOLUTION

Splice Accessories:

Crimp splice protector	111A0001
Splice holder for 12 crimp splice protectors	111A0000
Shrink splice protector	111A0003
Splice holder for 6 shrink splice protectors	111A0002
Splice cassette	111A0008
Cover for splice cassette	111A0015
Strain relief for 900µm-buffered fiber	111A0009
Cable gland PG13,5 for cable diameter 5 – 9 mm	111A0426
Cable gland PG16 for cable diameter 7 – 12 mm	111A0427
Cable gland PG21 for cable diameter 9 – 16 mm	111A0402
Screw plug PG13,5	111A0430
Screw plug PG16	111A0431
Screw plug PG21	111A0432

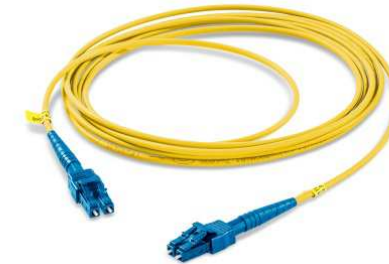


PerCONNECT® CABLING SOLUTION

FO Duplex Patchcord

Connector system: LC-Compact/LC-Compact	OS2, 1m
Cable type: I-V(ZN)H2, FRNC-LSZH	OS2, 2m
Round 2,8mm	OM3, 1m
	OM3, 2m
	OM4, 1m
	OM4, 2m

087L6600G657A1-1000
 087L6600G657A1-2000
 087L6601OM3-1000
 087L6601OM3-2000
 087L6601OM4-1000
 087L6601OM4-2000



FO Duplex Patchcord

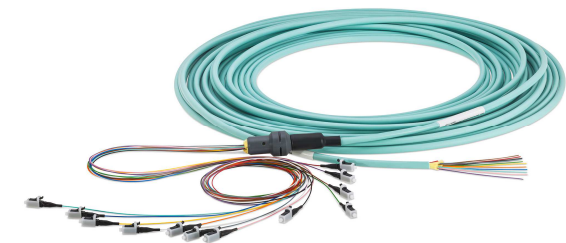
Connector system: LC-Compact/LC-Compact	OS2, 5m
Cable type: I-V(ZN)H(ZN)H 2, FRNC-LSZH	OM3, 5m
Double-jacket, round 2,8/5,0mm	OM4, 5m

087L6610G657A1-5000
 087L6613OM3-5000
 087L6613OM4-5000

PerCONNECT® Trunk cable, preassembled on one side

Cable type: I-V(ZN)H 12x0,9	12 Fibers OS2
	24 Fibers OS2
Mini-Breakout	12 Fibers OM3
	24 Fibers OM3
	12 Fibers OM4
	24 Fibers OM4

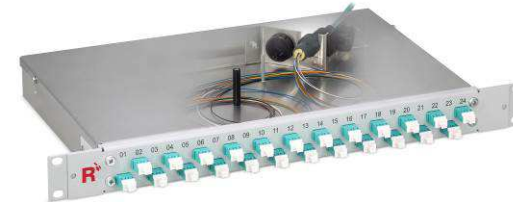
032L0904Halbtrunk
 032L0905Halbtrunk
 032L0535OM3Halbtrunk
 032L0538OM3Halbtrunk
 032L0535OM4Halbtrunk
 032L0538OM4Halbtrunk



PerCONNECT® CABLING SOLUTION

19" PerCONNECT® Distribution Panel

- | | | |
|---|---|--|
| <ul style="list-style-type: none"> • 1 HU, RAL 7035, fixed installation • Body: aluminum • Connector system: LC-Duplex | <ul style="list-style-type: none"> 12 Fibers OS2 24 Fibers OS2 48 Fibers OS2 12 Fibers OM3 24 Fibers OM3 48 Fibers OM3 12 Fibers OM4 24 Fibers OM4 48 Fibers OM4 | <ul style="list-style-type: none"> 231L0173 231L0175 231L0177 231L1293OM3 231L1295OM3 231L1298OM3 231L1293OM4 231L1295OM4 231L1298OM4 |
|---|---|--|



Wall Distribution for up to 48 Fibers

- | | | |
|--|---|--|
| <ul style="list-style-type: none"> • Connector system: LCD • Material and color: steel, RAL 7035 (light gray) • Dimensions: 300 x 300 x 85 mm | <ul style="list-style-type: none"> 12 Fibers OS2 24 Fibers OS2 48 Fibers OS2 12 Fibers OM3 24 Fibers OM3 48 Fibers OM3 12 Fibers OM4 24 Fibers OM4 48 Fibers OM4 | <ul style="list-style-type: none"> 116L2143 116L2145 116L2147 116L2153OM3 116L2155OM3 116L2157OM3 116L2153OM4 116L2155OM4 116L2157OM4 |
|--|---|--|



Universal box 360x254x111mm Distribution box with inside patch field

- | | | |
|---|--|--|
| <ul style="list-style-type: none"> • Connector system: LCD/LCD • Material and color: plastic, RAL 7035 (light gray) | <ul style="list-style-type: none"> 24 Fibers OS2 48 Fibers OS2 24 Fibers OM3 48 Fibers OM3 24 Fibers OM4 48 Fibers OM4 | <ul style="list-style-type: none"> 118L4002 118L4003 118L4006OM3 118L4007OM3 118L4006OM4 118L4007OM4 |
|---|--|--|



Mini-Universal Distribution box

- | | | |
|---|---|--|
| <ul style="list-style-type: none"> • Material and color: plastic, RAL 7035 (light gray) • Connector system: LC-Duplex | <ul style="list-style-type: none"> 12 Fibers OS2 12 Fibers OM3 12 Fibers OM4 | <ul style="list-style-type: none"> 114L0481 114L0582OM3 114L0582OM4 |
|---|---|--|



PerCONNECT® CABLING SOLUTION

MTP® application:

Patchcord, 12F, MTP®f, preassembled on one side

- | | | |
|-------------|---------------|-----------------------------|
| • 3,0/4,5mm | 12 Fibers OM3 | 080L0766OM3Halbtrunk |
| | 12 Fibers OM4 | 080L0766OM4Halbtrunk |



Breakout, 24F, MTP®12f, preassembled on one side

- | | | |
|---------------------------------------|---------------|-----------------------------|
| • I-F(ZN)HH2x12 with square interface | 24 Fibers OM3 | 037L0101OM3Halbtrunk |
| | 24 Fibers OM4 | 037L0101OM4Halbtrunk |



SMAP-G2 MTP®-Module 1/4

- | | | |
|--------------------------------|---------------|--------------------|
| • 24 Fibers | 24 Fibers OM3 | 170L2002OM3 |
| • Front 6 LC-Quad | 24 Fibers OM4 | 170L2002OM4 |
| • Backplane: 2 MTP®-12F (male) | | |
| • RAL9005 black | | |



SMAP-G2 Distribution Panel 1 HU

- | | |
|----------------------------------|-----------------|
| • Empty housing for front plates | 171L0001 |
| • or MTP®-Modules, | |
| • RAL 9005 black | |



PerCONNECT® CABLING SOLUTION

Accessories:

Universal-Cable-Fixture for our PerCONNECT® Square-Interface

111L0650

To fix all kinds of cables in „PerCONNECT® style“,
Tool-less mounting through simple hook-in.
Appropriate for cable diameters 6mm to 18mm



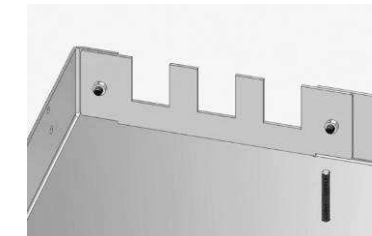
Support for 6 cable glands up to PG 16

111L0417



Support for 6 PerCONNECT® Trunks

111L0425



Support for 4 PerCONNECT® Trunks

111L0416

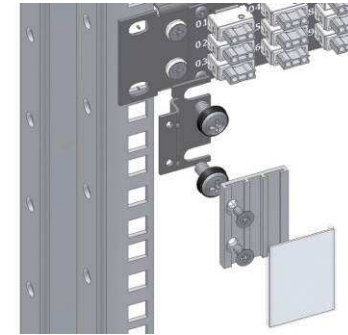


PerCONNECT® CABLING SOLUTION

19" 1 HU Labeling field

171A0002

- Material: Steel, powder-coated, RAL 9005 black



19" 1 HU Patchcord guide

111A0450

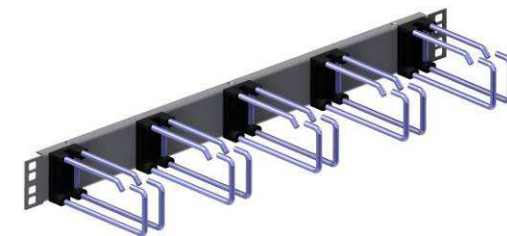
- Material: Steel, powder-coated , RAL 7035 light gray
- Cable bracket, PA black, L=56mm



19" 1 HU Patchcord guide patch cable route

111A0469

- Material: Steel, powder-coated , RAL 7035 light gray
- Cable bracket, metal, L=110mm



PerCONNECT® CABLING SOLUTION

**Keystone wall outlet 45x45mm
1 Port unequipped pure white**

114L1001

- module plug direction approx. 30° downwards



Keystone wall outlet 45x45mm 2 Ports unequipped pure white

114L1002

- module plug direction approx. 30° downwards

Keystone wall outlet 80x80mm 1 Port unequipped pure white

114L1011

Keystone wall outlet 80x80mm 2 Ports unequipped pure white

114L1012

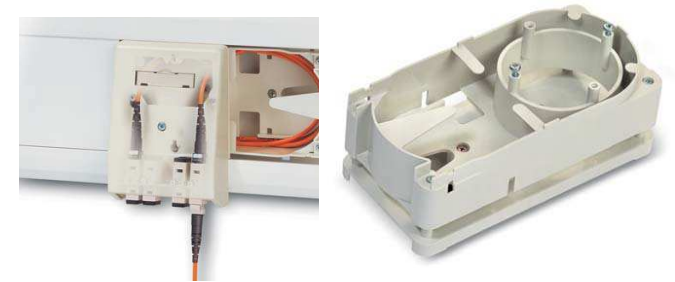


FO-outlet 4x LCD, 9µmOS2 pure white UP
FO-outlet 4x LCD, 50µmOM3 pure white UP
FO-outlet 4x LCD, 50µmOM4 pure white UP

114L0041
114L0102OM3
114L0102OM4

FO-outlet 4x LCD, 9µmOS2 pure white AP
FO-outlet 4x LCD, 50µmOM3 pure white AP
FO-outlet 4x LCD, 50µmOM4 pure white AP

114L0161
114L0212OM3
114L0212OM4



Cable reservoir 50mm

114L0320

PerCONNECT® CABLING SOLUTION

Rack: Central Distributor IP 20:

- dismountable steel profile cabinet rack
- two lateral sash doors with quick lock mechanism
- front and rear perforated sheet metal door with three-point lock mechanism (perforated door surface: 80 %)
- installation of a profile half-cylinder possible
- 19" level 42 HU, front and rear
- top panel with cable entry and/or fan module option
- base provided
- cover plates in the bottom area can be removed for cable entry
- for W=800 mm: metal cable clamps 66 mm × 125 mm at the front 19" level (10 pieces)
- earthing kit (installed)
- screw set M 5 (50×)

Finish:

Trim parts/base:

RAL 7035 light gray,

Design profile: RAL 3002 carmine red, other colours on request

Delivery:

fully assembled, base provided

RAL 7035 light gray: 142A5001



PerCONNECT® CABLING SOLUTION

Floor Distributor: 19" floor-standing enclosure

- developed for flexible networking solutions in office applications
- fast and easy access due to dismountable frame covers
- solid frame construction (welded frame)
- available dimensions: D=400 mm, W=600 mm
- pre-perforated cut-outs for easy cable entry in top & bottom
- possibility to mount fan-units in top & bottom
- door hinges interchangeable (upon request)
- doors with lever lock (profile semi cylinder optional)
- covers and side walls with sash fasteners
- wide range of possibilities for configuration
- full range of IT-specific accessories

Technical information

Material: sheet metal

Cover made from Aluminum

Surface: powder coated RAL 7035 light gray

Side walls in RAL 7037 dust gray

Delivery:

Assembled

9 HU RAL 7035 light gray: 142A5011

15 HU RAL 7035 light gray: 142A5012

19 HU RAL 7035 light gray: 142A5013



PerCONNECT® CABLING SOLUTION

Floor Distributor: Wall-mounted Distributor

- protection class IP 54
- visually stylish enclosure
- space-saving design
- stable basic construction
- 2 doors with turning lever lock and three-point locking system
- one side with integrated glass pane
- detachable front cover
- doors with 1800 hinges for optimum accessibility
- profile half-cylinder lock: double bit key 5 mm
- integrated cable flange plates
- installation dimensions to IEC 60297-3-100
- integrated outlet filter (IP 54) for fan installation

Wall-mounted cabinet, 4 HU

Dimensions: H=230mm, W=506mm, D=536mm
with vertically positioned 19"-frame 4 HU.

4 HU RAL 7035 light gray: 142A5021

Wall-mounted cabinet, 6 HU

Dimensions: H=360mm, W=557mm, D=636mm
with vertically positioned 19"-frame 6 HU.

6 HU RAL 7035 light gray: 142A5022



PerCONNECT® CABLING SOLUTION

Floor Distributor: Wall-mounted enclosure 9-19 HU

- developed for flexible networking solutions in office applications
- fast and easy access due to dismountable frame covers
- solid frame construction (welded frame)
- available dimensions: D=400 mm, W=600 mm
- pre-perforated cut-outs for easy cable entry in top & bottom
- possibility to mount fan-units in top & bottom
- door hinges interchangeable (upon request)
- doors with lever lock (profile semi cylinder optional)
- covers and side walls with sash fasteners
- wide range of possibilities for configuration
- full range of IT-specific accessories

Technical information

Material: sheet metal

Cover made from Aluminum

Surface: powder coated RAL 7035 light gray

Side walls in RAL 7037 dust gray

Delivery:

Assembled

9 HU RAL 7035 light gray: 142A5023

15 HU RAL 7035 light gray: 142A5024

19 HU RAL 7035 light gray: 142A5025

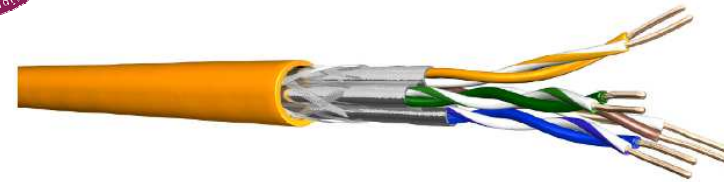


PerCONNECT® CABLING SOLUTION

Cat. 7 S/FTP shielded:

Prysmian Draka UC900
 4 PiMF AWG 23
 FRNC-LSZH
 Color: orange
 GHMT PVP Certificate No.: P3016g-xx-E
 CPR: Dca
 Maximum delivery length per wooden drum: 500 m

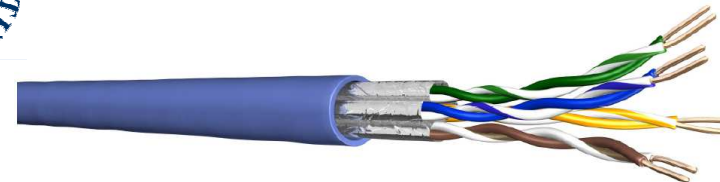
Part number: 047A0011



Cat. 6A U/FTP unshielded, 305 m (1000 ft.) in cardboard:

Prysmian Draka UC500
 4 PiMF AWG 23
 FRNC-LSZH
 Color: blue
 3P Compliance Statement No.: 109461N
 CPR: Dca

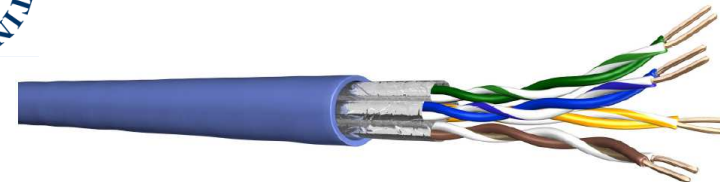
Part number: 047A0012



Cat. 6A U/FTP unshielded:

Prysmian Draka UC500
 4 PiMF AWG 23
 FRNC-LSZH
 Color: blue
 3P Compliance Statement No.: 109461N
 CPR: Dca
 Maximum delivery length per wooden drum: 500 m

Part number: 047A0013



PerCONNECT® CABLING SOLUTION

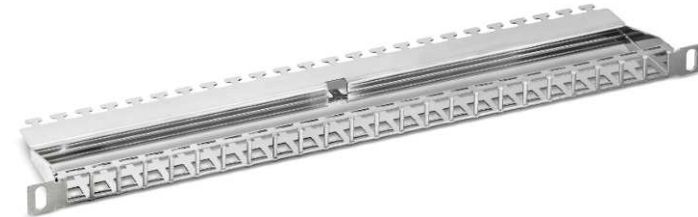
19" Cu Panels:

0,5 HU fits for 24 Keystone Jacks:

Material: stainless steel

Depth: 100mm

Part number: 800A0220



1 HU fits for 24 Keystone Jacks:

Material: Steel, powder-coated

Depth: 150mm

Part number:

RAL 7035 light gray 800A0213

RAL 9005 black 800A0214



1 HU fits for 24 Keystone Jacks, 30° cable guide:

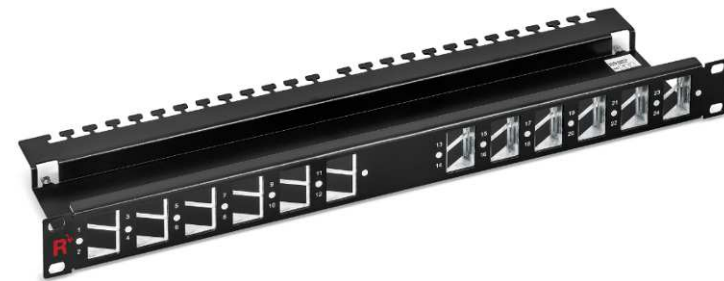
Material: Steel, powder-coated

Depth: 120mm

Part number:

RAL 7035 light gray 800A0219

RAL 9005 black 800A0218



PerCONNECT® CABLING SOLUTION

RJ45 Jack:

RJ45 Keystone Jack Cat. 6_A shielded

- For AWG24-22 solid wire
- ISO/IEC 11801 and DIN EN 50173-1
- PoE+ DIN IEC 60512-99-011:2013 and DIN IEC 60512-9-3:2010
- Zinc diecast
- With dust cap
- GHMT PVP Certificate No.: z4686a-xx-E

Part number: 800A0002

RJ45 Keystone Jack Cat. 6 unshielded:

For AWG26-22 solid wire suited, plastic black, white color on request

Part number: 800A0005

RJ45 Keystone Jack Cat. 6_A unshielded:

For AWG26-22 solid wire suited, plastic black, white color on request

Part number: 800A0006

Keystone-coupler with LC-Duplex adapters:

Part number:

OM4 violet: 120A0361OM4

SM blue: 120A0360



PerCONNECT® CABLING SOLUTION

RJ45 Patchcords:

RJ45 Patchcord Cat. 6_A shielded:

Cat. 6_A ISO/IEC, Coding 1:1, GHMT PVP Certificate No.: z4826a-xx-E

On both sides shielded RJ45-Connector with 2 component boot with Latch protection and dust cap

Cable type: Cat.7, S/FTP, flex, 4 PiMF AWG27/7, up to 900 MHz, FRNC-LSZH

Color: gray

With other lengths, colors and types on request



Length	Part numbers
1 Meter	820A1019M-1
2 Meters	820A1019M-2
3 Meters	820A1019M-3
5 Meters	820A1019M-5
10 Meters	820A1019M-10

RJ45 Patchcord Cat. 6 unshielded:

Cat. 6 ISO/IEC, Coding 1:1

On both sides unshielded RJ45-Connector

Cable type: Cat.6 U/UTP 4x2xAWG24/7, FRNC-LSZH

Color: gray

With other lengths, colors and types on request



Length	Part numbers
1 Meter	820A0978M
2 Meters	820A0979M
3 Meters	820A0980M
5 Meters	820A0981M
10 Meters	820A0982M

About Rosenberger OSI:

Since 1991, Rosenberger Optical Solutions & Infrastructure (Rosenberger OSI) has been an expert in innovative fiber optic cabling infrastructure and service solutions for Data Centers, Local Networks, Telecom and Industrial.

The products and services can be found wherever largest amounts of data have to be transferred quickly and securely. In addition to the development and production of a broad portfolio of fiber optic and copper cabling systems, Rosenberger OSI also offers a variety of services such as planning, installation and maintenance of cabling infrastructure. Rosenberger OSI has been a part of the globally operating Rosenberger Group since 1998, a worldwide leading provider of high-frequency-, high-voltage-, and fiber-optic-connection solutions headquartered in Germany.

For further information, please visit: www.rosenberger.com/osi

Rosenberger

Rosenberger-OSI GmbH & Co. OHG

Optical Solutions & Infrastructure | Endorferstr. 6 | 86167 Augsburg | Telephone: +49 821 24924-0
info-osi@rosenberger.com | www.rosenberger.com/osi

Rosenberger® is a registered trademark of Rosenberger Hochfrequenztechnik GmbH & Co. KG. All rights reserved. © Rosenberger 2017

For technical reasons, we reserve us the right to make any deviations from the illustrations in the product information
Transfer to third party only by authority of Rosenberger-OSI GmbH & Co. OHG- All rights reserved.

Creation date: 2017-09-28
Valid since: 2017-10-20
Revision: 004