

PreCONNECT® BREAKOUT

PRODUCT INFORMATION



PreCONNECT® BREAKOUT solution is available in three end face quality features: BASIC, PURE, and LOTUS

Define the end-face quality according to your application requirements:



Quality feature BASIC is our well-proven, high-grade, standards compliant product in terms of end-face geometry, defect, and cleanliness, providing excellent IL and RL performance:

- The PreCONNECT® factory-assembled plug & play system enables quick and reliable, cost efficient, installation and performance
- Harmonized modular components of the quality feature BASIC solution ensure end to end performance of the entire channel



Quality feature PURE is the enhanced version of our quality feature BASIC, but with more stringent defect and cleanliness screening and factory sealed, tamper evident adapter-interfaces.

- Guaranteed protection of the polished connector end-face against contamination and damage through sealed adapter-interfaces, enabling time savings during initial installation and commissioning due to the elimination of the need for cleaning and testing*/**.
- Quality feature PURE provides an industry leading low random mate insertion and return loss (mean) which enables up to six (6) mated pairs in a 10G/OM4 application up to 300m.



Quality feature LOTUS builds upon our BASIC and PURE performance by introducing our unique LOTUS end-face coating technology that provides dirt, moisture, and grease repellence to maintain cleanliness in initial and subsequent matings.

- Potential long-term time savings by reducing or eliminating the need for cleaning during initial installation and subsequent MACs
- Increased reliability and availability throughout various environmental and contaminate environments

Part numbers:

Quality feature BASIC: The part numbers XXXAXXXX listed in this document are valid for the BASIC quality feature.

Quality feature PURE: Add a “**P**” to the end of the quality feature BASIC part number (*Example: XXXAXXXX**P***)

Quality feature LOTUS: Add an “**L**” to the end of the quality feature BASIC part number (*Example: XXXAXXXX**L***)

(Note: PURE trunk cables have factory attached sealed coupling adapters incorporated and thus utilize empty patch panels and enclosures)

* While Rosenberger does not require permanent link or channel testing for warranty registration of PURE installations due to guaranteed performance, certain customers will require testing documentation for their records.

** Only applicable when all components are of quality feature PURE and installed by trained PURE installers.

Applications:

Cablings of data centers and their IT rooms, data center containers and EDGE computing sites

System consists of:

- Factory assembled FO breakout cables, FRNC-LSZH indoor cables, up to 24 fibers
- With connector systems LC, SC and E2000™
- Suitable Patchcords
- Useful accessories
- Patch Location Rack

Features:

- For few numbers of fibers and short lengths:
 - Trunks up to 24 fibers
 - Practical lengths: Cost comparison by break-even calculation versus PreCONNECT® STANDARD
- Migration to MPO based parallel optics applications possible by using Migration-Harnesses
- 19" Panel systems in two different types, modular SMAP-G2 and basic distribution panels selectable

Your benefits at a glance:

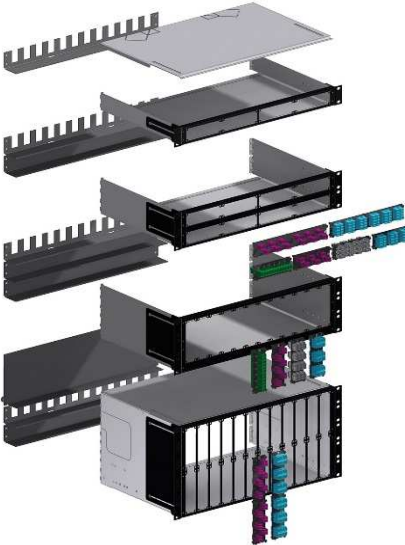
- Most cost-effective solution for Trunks up to 24 fibers and short lengths
- Fast and safe installation through factory assembled Plug & Play systematic
- Highest quality and cost-efficiency through factory assembling
- PreCONNECT® cabling systems consist of perfectly harmonized modular single components



PreCONNECT® BREAKOUT Trunk



Highly modular SMAP-G2 19" Distribution Panels



Classical 19" 1 and 2 HU Distribution Panels, fixed installation and telescopic complete pullout



Patchcords



Patch Location Rack



Accessories



Applications:

Cabling of data centers and their IT rooms, data center containers and EDGE computing sites

- **Universal to use FO cabling system up to 24 fibers per Trunk**
- **Cost and attenuation optimized**
- **Focused on the useful and necessary**

Properties:

- PreCONNECT® square-interfaces on both sides which can be tool-less hooked into PreCONNECT® 19" Panels for tensile and torsion resistant fixing of the PreCONNECT® BREAKOUT Trunks.
- Connector legs on both sides can be ordered application specific „variable“ all the same length, from 20cm to max. 5m, or as our „standard stepped“ fitting to our PreCONNECT® 19" Panels
- Mixed configurations, ex. side A „standard stepped“ and side B „variable“ are possible too.

Polarity: The connector legs are alpha numerical uniquely coded. The standard polarity is „channelwise crossed“ (pairwise flipped) for full-duplex transmission systems – A1 to B1, A2 to B2, etc. On request „uncrossed“ deliverable.

Length definition: Order-length = length between the connectors of the longest legs at both sides, not between the PreCONNECT® square-interfaces.

Delivery form: Dependent on the length as cable ring or on cardboard or wooden drum, 100% IL factory measured with measurement protocol, product label with serial number on both sides.

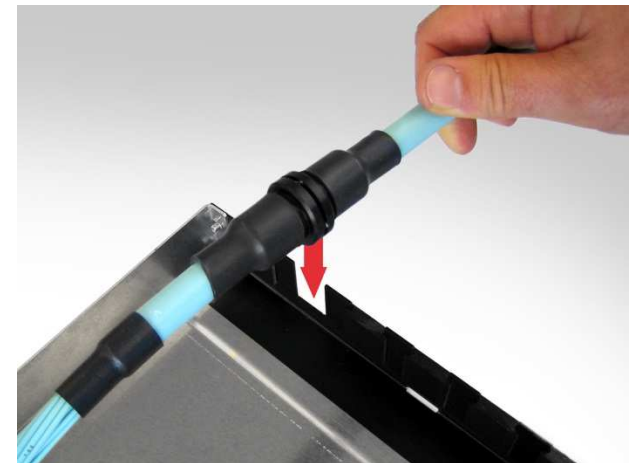
System description:

Our PreCONNECT® BREAKOUT cabling system consists of:

- PreCONNECT® BREAKOUT Trunk called factory assembled FO breakout cables up to 24 fibers, can be ordered with application specific „variable“ long connector legs
- therefore explicitly developed 19" Panel systems
- a large variety of Patchcords and accessories
- and Patch Location Racks

We consider Breakout-Trunks as an alternative product on short lengths to our well established loose-tube cables based Trunks. Breakout-Trunks do not need cable dividers, since the connectors are directly assembled at the robust sub-elements of the breakout cables.

The „Break-Even-Length“ of Breakout-Trunks versus loose-tube cables based Trunks depends on the type. The cost reduction of the not needed cable dividers is equalized by the higher per meter price of Breakout-Trunks at certain lengths.



Properties:

Breakout cable types:

PreCONNECT® BREAKOUT Trunks are deliverable with all breakout cables up to 24 fibers,

- Indoor cable I-V(ZN)HH

Cable data, see separate cable data sheets.

Fiber types:

With all common Fiber types deliverable. Bend-insensitive fibers standard.

Fiber data, see separate fiber data sheets.

Connector types:

With all common connector types deliverable, mostly used:

- LC-Compact
- SC-Duplex
- E-2000™



Connector data, see separate connector data sheets.



- MTP® see product information PreCONNECT® OCTO and DUODECIM



Properties:

Installation protection:

The package of application specific „variable“ legs is a not pull resistant dust-proof foil tube.



On „standard stepped“ legs you can select:

- dust-proof foil tube
- and 150 N tensile-strength, crush and kink resistant, IP50 dust-proof indoor-installation-tube



Installation Tube Indoor, IP50 dustproof

Part numbers PreCONNECT® BREAKOUT Trunks

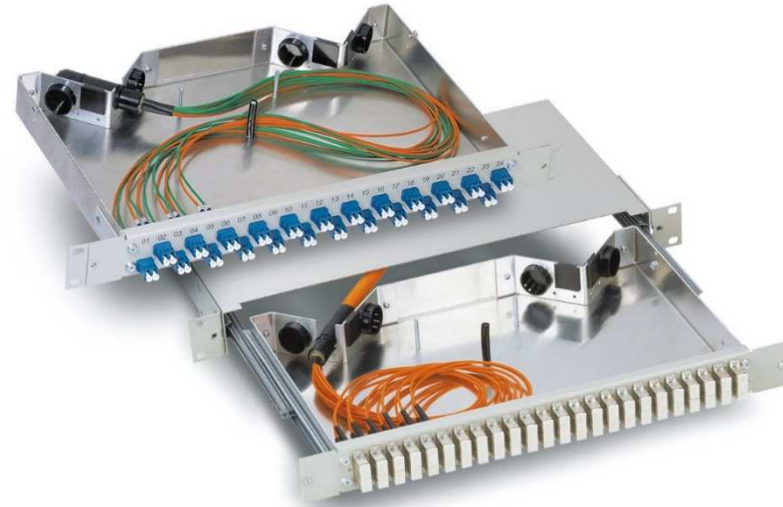
Number of channels/fibers	Connectors on both sides	SM	OM3	OM4
6/12	LC-Compact PC 0°	036A0503G657A1	036A0503OM3	036A0503OM4
	LC-Compact APC 8°	036A0519G657A1	---	---
	SC-Duplex PC 0°	On request	On request	On request
	E-2000™ HRL Simplex APC 8°	On request	---	---
12/24	LC-Compact PC 0°	036A0504G657A1	036A0504OM3	036A0504OM4
	LC-Compact APC 8°	On request	---	---
	SC-Duplex PC 0°	On request	On request	On request
	E-2000™ HRL Simplex APC 8°	036A0520G657A1	---	---

Technical data, see Product profile or separate data sheets Trunk, cable, fibers, connectors. With other fiber types, connectors and number of fibers on request.

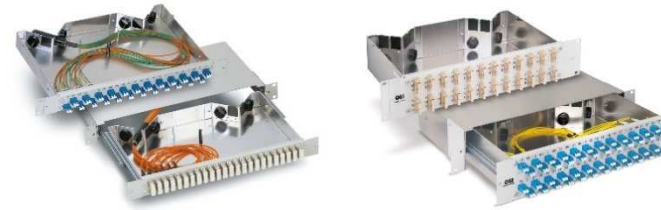
19" 1 and 2 HU Distribution Panels:

Properties:

- Basic panel with optimized functionality
- Suitable for the connection of all cables assembled by Rosenberger OSI
- Available in the following two variants:
 - Fixed installation
 - Telescopic complete pullout: fully retractable
- Torsion and strain-resistant cable support for:
 - 2 PreCONNECT® Trunk cable dividers for 1 HU
 - 4 PreCONNECT® Trunk cable dividers for 2 HU
- 2 PG 21 (29 mm) cable inputs
- Oblique 45° cable guide to rear, guide direction selectable
- 2 universal supports can be mounted for simplex, duplex and breakout cables, see Accessories
- Screen-printed front labeling: numerical and alphanumerical
- Material and color:
 - Body: aluminium, natural
 - Front: powder-coated aluminum, RAL 7035 (light gray)
- Depth: 250 mm



19" 1 and 2 HU Distribution Panels:



Part numbers 1 HU RAL 7035 (light gray)

Number of channels/ fibers	Adapter type	Fixed installation			Telescopic complete pullout		
		SM	OM3	OM4	SM	OM3	OM4
6/12	LC-Duplex	PC 0°: 231A0173	231A1293OM3	231A1293OM4	PC 0°: 230A0173	230A1293OM3	230A1293OM4
	SC-Duplex plastic	PC 0°: 231A0420	231A0440OM3	231A0440OM4	230A0420	230A0440OM3	230A0440OM4
	SC-Duplex metal	231A0153	231A0013		230A0153	230A0013	
	E-2000™ HRL Simplex APC 8°	231A1003	---		230A1003	---	
12/24	LC-Duplex	PC 0°: 231A0175	231A1295OM3	231A1295OM4	PC 0°: 230A0175	230A1295OM3	230A1295OM4
	SC-Duplex plastic	PC 0°: 231A0421	231A0441OM3	231A0441OM4	230A0421	230A0441OM3	230A0441OM4
	SC-Duplex metal	231A0155	231A0015		230A0155	230A0015	
	E-2000™ HRL Simplex APC 8°	231A1005	---		230A1005	---	
24/48	LC-Duplex	PC 0°: 231A0177	231A1298OM3	231A1298OM4	PC 0°: 230A0177	230A1298OM3	230A1298OM4
	SC-Duplex plastic	PC 0°: 231A0422	231A0442OM3	231A0442OM4	230A0422	230A0442OM3	230A0442OM4
	SC-Duplex metal	231A0158	231A0018		230A0158	230A0018	






Part numbers 2 HU RAL 7035 (light gray)

24/48	LC-Duplex	PC 0°: 235A1287	235A1317OM3	235A1317OM4	PC 0°: 234A1287	234A1317OM3	234A1317OM4
	SC-Duplex plastic	PC 0°: 235A0180	235A0400OM3	235A0400OM4	PC 0°: 234A0180	234A0400OM3	234A0400OM4
	SC-Duplex metal	235A0157	235A0017		234A0157	234A0017	
	E-2000™ HRL Simplex APC 8°	235A1007	---		234A1007	---	
48/96	LC-Duplex	PC 0°: 235A1289	235A1319OM3	235A1319OM4	PC 0°: 234A1289	234A1319OM3	234A1319OM4
	SC-Duplex plastic	PC 0°: 235A0181	235A0401OM3	235A0401OM4	PC 0°: 234A0181	234A0401OM3	234A0401OM4
	SC-Duplex metal	235A0168	235A0018		234A0168	234A0019	






With other adapter types and numbers of fibers on request.

19" 1 and 2 HU Distribution Panels Accessories:

Part numbers accessories 1 HU

Tertiary cable support Standard	1 unit	111A0403	
Large, with brush	1 unit	111A0418	
Support for 4 PreCONNECT® Trunks	1 set = 2 plates	111A0416	
Support (straight) for 6 PreCONNECT® Trunks	1 set = 2 plates	111A0425	
1 HE labeling field 30 x 35 mm	1 unit	111A0415	

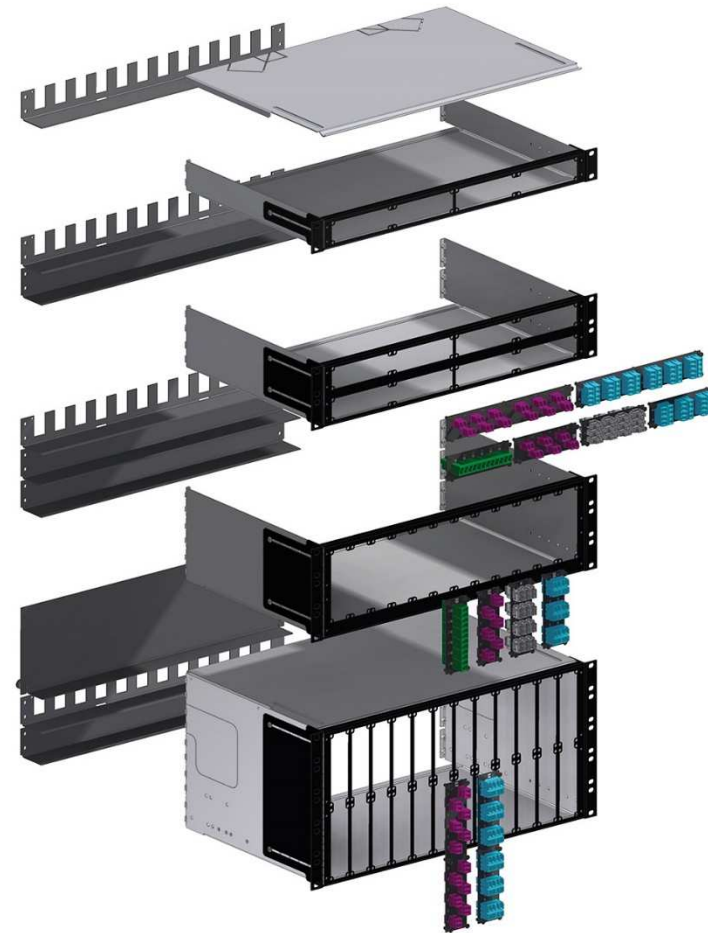
Part number accessories 2 HU

Tertiary cable support Standard	1 unit	111A0403	
Large, with brush	1 unit	111A0611	
Support for 8 PreCONNECT® Trunks	1 set = 4 plates	111A0612	
Support (straight) for 12 PreCONNECT® Trunks	1 set = 4 plates	111A0613	
2 HU labeling field 30 x 88 mm	1 unit	111A0610	

PreCONNECT® SMAP-G2 19" Panel System with 1HU Part-Front-Plates PFP:

Properties:

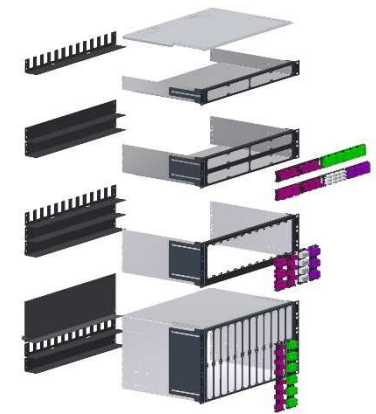
- Maximized modularity and flexibility thanks to application specific combinations of 1 HU ¼ und ½ Part Front Plates (PFPs)
- PFPs can be inserted without the need for tools thanks to the use of quick-release fasteners
- Variable 19" screw-fit mounting plates; mounting depth adjustable
- Extremely robust, lightweight panel
- Suitable for the connection of all cables assembled by Rosenberger OSI
- 1 to 5 HU, equipped with 1 HU ¼ or ½ PFPs depending on number of fibers and type of adapter
- Matrix numbering of the PFPs:
- Channels in part front plates: 1 to n labeled, PFPs in the panel are numbered with clips 1 to n (example: channel 3 - 4 is in PFP 3, channel 4)
- Material and color:
 - Front: Powder-coated steel, RAL 9005 (matt black)
 - Body: aluminium, natural
 - Back plane: Powder-coated steel, RAL 9005 (matt black)
- Depth: 300 mm
- ***SMAP-G2 Panel for PURE Trunks are described behind in this document.***



PreCONNECT® SMAP-G2 19" Panel System with 1HU Part-Front-Plates PFP:

Part numbers single components




19" Empty Panels RAL 9005 (black)						
1 HU						171A0001
2 HU						172A0001
3 HU						173A0001
5 HU						175A0001
Part-Front-Plates 1HE 1/4 – RAL 9005 (black)						
Blind-Part-Front-Plate		170A0001				
Number of channels/fibers	Adapter type	SM PC 0°	SM APC 8°	OM3	OM4	
6/12	LC-Duplex	170A0110	170A0120	170A0130OM3	170A0130OM4	
	SC-Duplex	170A0410	170A0420	170A0430OM3	170A0430OM4	
	E-2000™-Compact	170A0510	170A0520	170A0530		
12/24	LC-Quad	170A0210	170A0220	170A0230OM3	170A0230OM4	
Part-Front-Plates 1HE 1/2 – RAL 9005 (black)						
Blind-Part-Front-Plate		170A0002				
Number of channels/fibers	Adapter type	SM PC 0°	SM APC 8°	OM3	OM4	
12/24	LC-Duplex	170A0150	170A0160	170A0170OM3	170A0170OM4	
	SC-Duplex	170A0450	170A0460	170A0470OM3	170A0470OM4	
	E-2000™-Compact	170A0550	170A0560	170A0570		
12 x 2 = 24/48	LC-Quad	170A0250	170A0260	170A0270OM3	170A0270OM4	



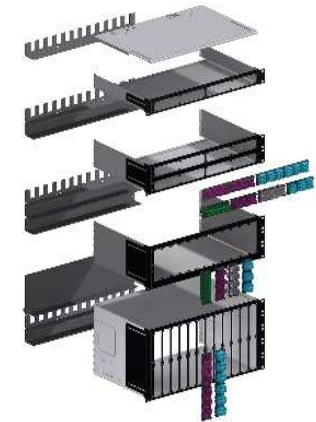
With other adapter types and numbers of fibers on request.

PreCONNECT® SMAP-G2 19” Panel System with 1HU Part-Front-Plates PFP:

Part numbers single components

Part-Front-Plates with labeling field 1HU 1/4 – RAL 9005 (black)						
Number of channels/fibers	Adapter type	SM PC 0°	SM APC 8°	OM3	OM4	
6/12	LC-Duplex	170A3110	170A3120	170A3130OM3	170A3130OM4	
	E-2000™-Compact	170A3510	170A3520	170A3530		
12/24	LC-Quad	170A3210	170A3220	170A3230OM3	170A3230OM4	

With other adapter types and numbers of fibers on request.



PreCONNECT® SMAP-G2 19” Panels factory assembled with 1HU Part-Front-Plates PFP:

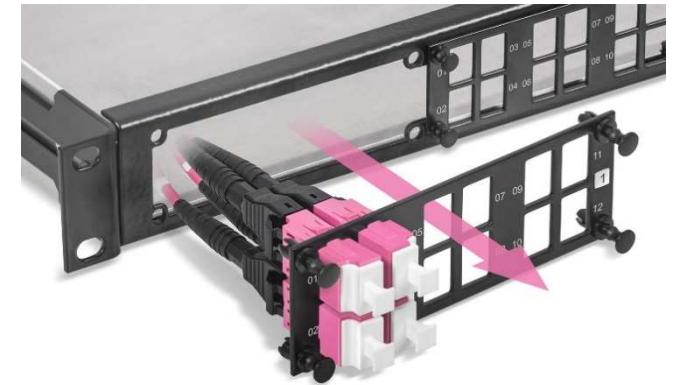
Part numbers for SMAP-G2 Panel with Part-Front-Plates PFP				
HU	Number and PFP type	Number LC-Duplex ports	OM4	SM
1	4 x 1HU ¼ 6 LCQ	48	171A5000OM4	171A5001
1	2 x 1HU ½ 12 LCQ	48	171A5002OM4	171A5003
2	8 x 1HU ¼ 6 LCQ	96	171A5004OM4	171A5005
2	4 x 1HU ½ 12 LCQ	96	172A5006OM4	172A5007

Other HU and configuration on request.

SMAP-G2 PURE
19" Distribution Panels empty:

Part numbers RAL9005 black, 300mm depth	
1HU	171A0001P
2HU	172A0001P
3HU	173A0001P
5HU	175A0001P

PreCONNECT® PURE LC-Duplex
adapter-interface
at Trunk connector legs

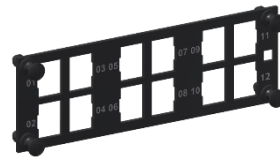


Standard back plane configuration for
max. 12 Trunk cable-dividers per panel.



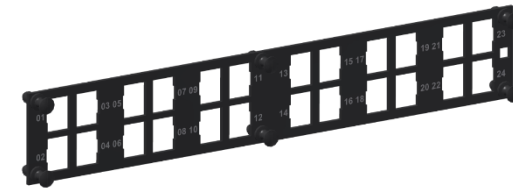
SMAP-G2 PURE Part-Front-Plates PFP

1HU 1/4 PFP for 12 LC-Duplex adapter-interfaces



1HU 1/4 Blind-PFP

1HU 1/2 PFP for 24 LC-Duplex adapter-interfaces



1HU 1/2 Blind-PFP

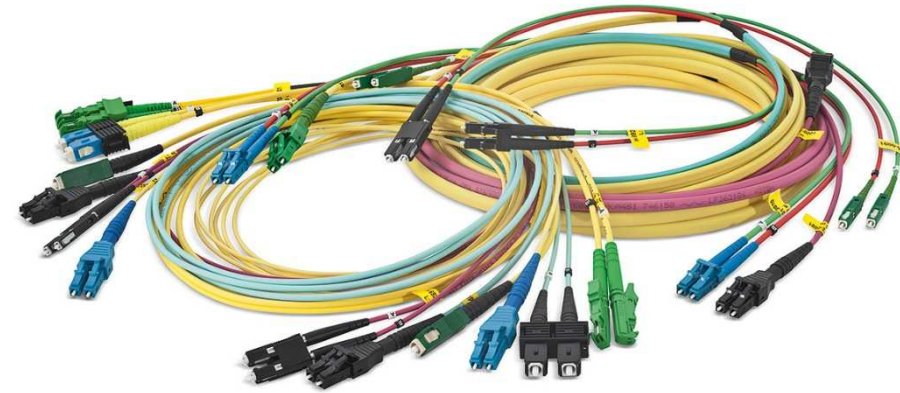


SMAP-G2 PURE 1HU 1/4 and 1/2 Part-Front-Plates part numbers RAL9005 black	
PFP type / number of adapter slots	SMAP-G2 PURE Part-Front-Plates without adapters
1/4 Blind-PFP	170A0001P
1/2 Blind-PFP	170A0002P
1/4 / 12 LC-Duplex	170A0130P
1/2 / 24 LC-Duplex	170A0170P

Patchcords:

Properties:

- Kink and crush resistance optimized for environmental conditions
- Suitable for operation in temperatures from -10 °C to +60 °C, patchcords for other temperature ranges on request
- Polarity:
 - Full-duplex cables with duplex connectors on both sides “crossed” A to B in accordance with ISO/IEC 11801 and EN 50173
 - Half-duplex cables with duplex/simplex connectors “uncrossed” A to A
 - Duplex cables with simplex connectors on both sides “uncrossed” A to A



Length tolerances:

- Up to 1 m = - 50 mm
- 2 m bis 3 m = - 100 mm
- 4 m bis 25 m = - 200 mm
- Longer than 25 m = - 1 %

Delivery form:

- Attenuation measured in accordance with IEC 61300-3-4 “C” or “Substitution” method, measurement values on request
- Serial number labels at the cable ends on both sides
- Individually packaged in foil bags with product ID label



Part numbers
Duplex Patchcords cable type Zipcord I-V(ZN)H 2 x 2.1 mm FRNC-LSZH

Connectors	Length	SM	OM3	OM4
LC-Duplex » LC-Duplex	variable	087A5005G657A1	087A5015OM3	087A5015OM4
LC-Duplex » SC-Duplex	variable	087A5035G657A1	087A5045OM3	087A5045OM4

With other connectors and fiber types on request.



Part numbers
Duplex Patchcords cable type Zipcord I-V(ZN)H 2 x 2.8 mm FRNC-LSZH

Connectors	Length	SM	OM3	OM4
SC-Duplex » SC-Duplex	variable	062A0180G657A1	062A0160OM3	062A0160OM4
SC-Duplex » LC-Duplex	variable	087A2068G657A1	087A2078OM3	087A2078OM4
E-2000™ HRL Simplex » E-2000™ HRL Simplex	variable	069A2200G657A1	-	-

With other connectors and fiber types on request.



Part numbers
Duplex Patchcords cable type double-jacket flat-breakout I-V(ZN)HH 2 x 2.1 mm FRNC-LSZH

Connectors	Length	SM	OM3	OM4
LC-Duplex » LC-Duplex	variable	087A1900G657A1	087A1911OM3	087A1911OM4
LC-Duplex » SC-Duplex	variable	087A2000G657A1	087A2079OM3	087A2079OM4
E-2000™ HRL Simplex » E-2000™ HRL Simplex	variable	069A2202G657A1	-	-

With other connectors and fiber types on request.



Part numbers
Duplex Patchcords cable type double-jacket flat-breakout I-V(ZN)HH 2 x 2.8 mm FRNC-LSZH

Connectors	Length	SM	OM3	OM4
SC-Duplex » SC-Duplex	variable	062A0179G657A1	062A0159OM3	062A0159OM4
SC-Duplex » LC-Duplex	variable	087A2069G657A1	087A2011OM3	087A2011OM4
E-2000™ HRL Simplex » E-2000™ HRL Simplex	variable	069A2201G657A1	-	-

With other connectors and fiber types on request.



Part numbers
Duplex Patchcords cable type round I-V(ZN)H 2.0 mm FRNC-LSZH

Connectors	Length	SM	OM3	OM4
LC-Compact » LC-Compact	variable	087A6620G657A1	087A6623OM3	087A6623OM4
LC-Compact APC 8° » LC-Compact APC 8°	variable	087A6622G657A1	-	-

With other connectors and fiber types on request.



Part numbers
Duplex Patchcords cable type round I-V(ZN)H 2.8 mm FRNC-LSZH

Connectors	Length	SM	OM3	OM4
LC-Compact » LC-Compact	variable	087A6600G657A1	087A6601OM3	087A6601OM4
LC-Compact APC 8° » LC-Compact APC 8°	variable	087A6609G657A1	-	-

With other connectors and fiber types on request.



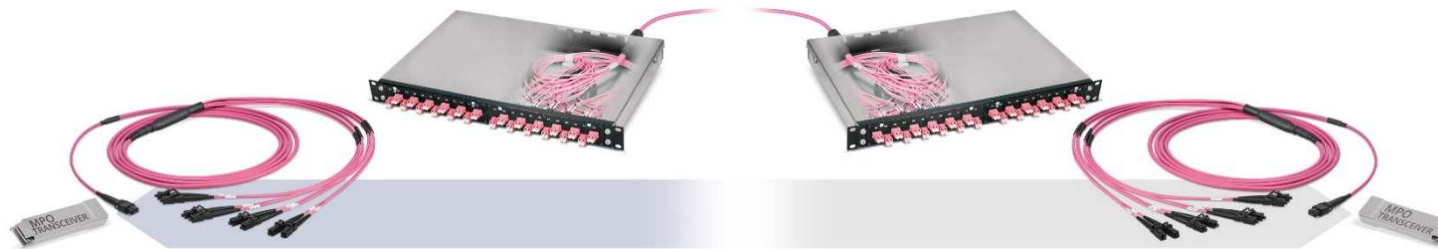
Part numbers
Duplex Patchcords cable type double-jacket round I-V(ZN)H(ZN)H 2.8/5.0 mm FRNC-LSZH

Connectors	Length	SM	OM3	OM4
LC-Compact » LC-Compact	variable	087A6610G657A1	087A6613OM3	087A6613OM4
LC-Compact APC 8° » LC-Compact APC 8°	variable	087A6612G657A1	-	-

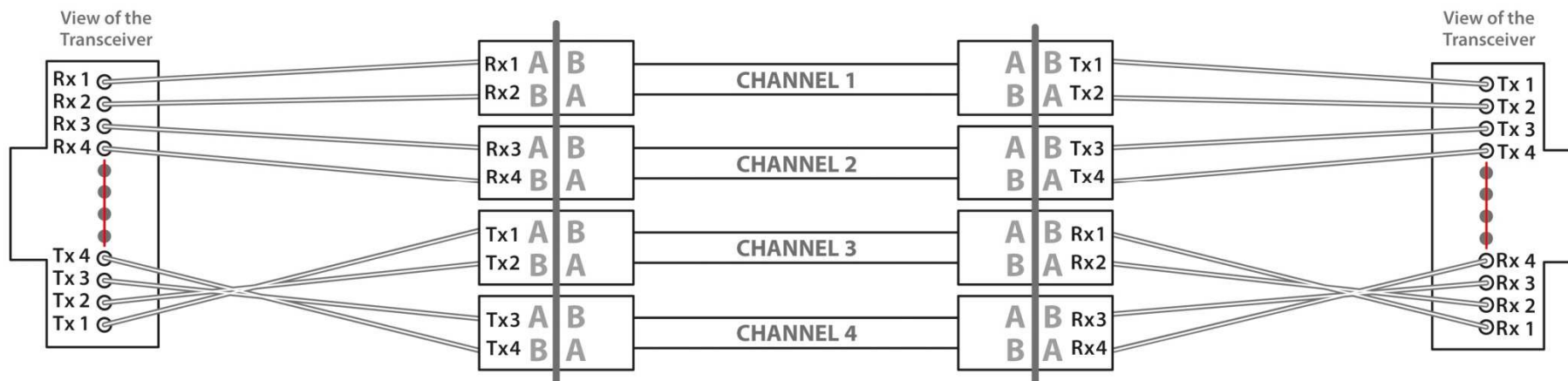
With other connectors and fiber types on request.

Migration of PreCONNECT® BREAKOUT to MTP®/MPO based Parallel Optics SR4 and PSM4 Applications:

- 40/100/200 GBASE-SR4
- 4 x 16/32 GFC
- PSM4



PreCONNECT® OM4 Migrations-Harnesse MTP® 12-female/8 LC-Simplex



Numbering of the LC-Simplex of the Migration-Harnesses, to be connected to the channel wise crossed LC-Duplex infrastructure acc. to this light propagation map.

Migration of PreCONNECT® BREAKOUT to MTP®/MPO based Parallel Optics SR4 and PSM4 Applications:

**OCTO Migrations-Harnesse
MTP® 12 female to 8 Simplex connectors**

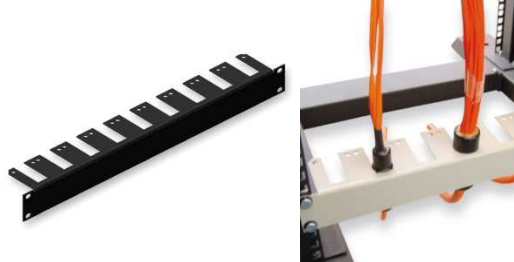

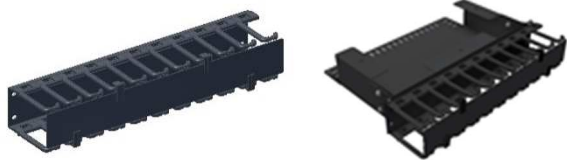

- 8 fibers 3/4.5 mm double jacket cable FRNC-LSZH
- Simplex leg-lengths = 0.5m, other lengths on request
- Simplex connectors numbered with the corresponding Tx1 to Tx4 and Rx1 to Rx4 of the attached Transceivers
- Order length = total length

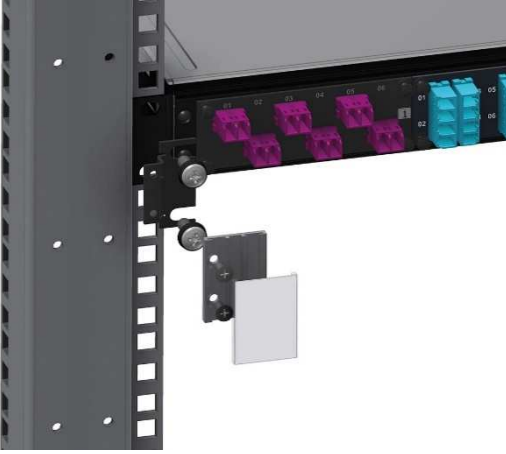
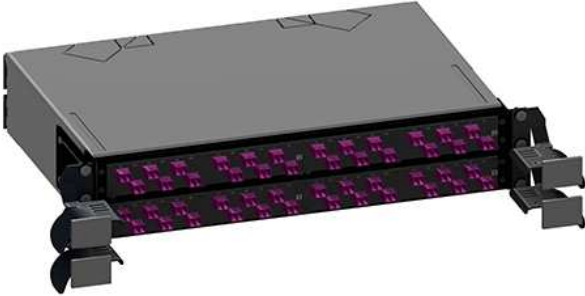



SR4 OM4 Part numbers	
MTP® 12 female to 8 SC-Simplex	076A0050OM4
MTP® 12 female to 8 LC-Simplex	076A0051OM4
MTP® 12 female to 8 MU-Simplex	076A0055OM4

PSM4 SM Part numbers	
MTP® 12 female to 8 LC-PC Simplex	076A0119G657A1
MTP® 12 female to 8 LC-APC Simplex	076A0120G657A1
MTP® 12 female to 8 MU-PC Simplex	076A0121G657A1
MTP® 12 female o 8 MU-APC Simplex	076A0122G657A1

Accessories:

	Part number	
<p>19" 1 HU Universal Trunk Cable Divider Holder</p> <p>For the universal installation of trunk cable dividers in 19" cabinets and racks. RAL 9005 (black)</p>	099A0085	
<p>19" 1 HU Individual Universal Trunk Cable Divider Holder</p> <p>For the universal installation of trunk cable dividers in 19" cabinets or racks or anywhere where these components can be installed individually. RAL 9005 (black)</p>	099A0065	
<p>19" Horizontal Cable Manager</p> <p>RAL 9005 (black)</p> <p>1 HU 2 HU</p>	111A0454 111A0453	
<p>19" Cable Overlength Panel to be mounted behind Cable Managers to store Trunk cable overlengths</p> <p>RAL 9005 (black)</p> <p>1 HU 2 HU</p> <p>Cable Managers must be ordered separately.</p>	142A0530 142A0531	

	Part number	
<p>Labeling Fields</p> <p>Suitable for all Rosenberger OSI panels and most commercially available panels, comprising:</p> <ul style="list-style-type: none"> - 1 labeling field - Mounting material - Mounting instructions <p>1 HU 2 HU 3 HU 4 HU 5 HU</p>	<p>171A0002 172A0002 173A0002 174A0002 175A0002</p>	
<p>1 HU Patchcord Guides</p> <p>For routing and fixing patchcords per height unit. 1 HU to both sides. The patchcord guide prevents excessively small bending radii which increase attenuation in the patchcord. Set consisting of 1 HU left-hand and right-hand patchcord guides with labeling fields and Velcro strips, M6 screws and cage nuts. Suitable for use in 600 mm wide cabinets.</p> <p>For 1 HU housing For 2 HU housing For 3 HU housing For 4 HU housing For 5 HU housing</p>	<p>171A0006 172A0006 173A0006 174A0006 175A0006</p>	

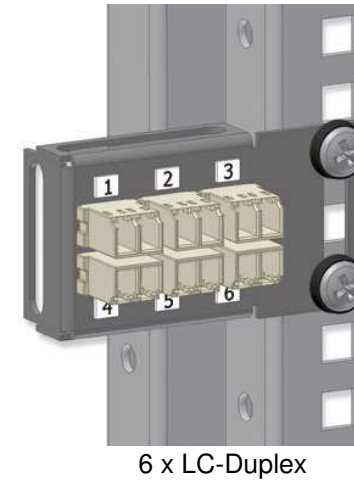
	Part number	
<p>Patchcord Guides with foldaway labeling field</p> <p>For routing and fixing patchcords to both sides. The patchcord guide prevents excessively small bending radii which increase attenuation in the patchcord.</p> <p>The foldaway labeling field can be opened for patching.</p> <p>RAL 9005 (black)</p> <p>1 HU 2 HU</p>	<p>170H0005 170H0006</p>	

Mini Universal Adapter Brackets

Suitable for installation on 19" bars and for universal mounting

Properties and delivery form:

- Material: Powder-coated sheet steel
- Color: RAL 9005 (matt black)
- Elongated holes on all sides for universal fixing
- Adapters mounted
- No screw or cage nuts



Part number

Number of Adapters / Adapter type		SM PC 0°	OM3	OM4
2	LC-Duplex	099A0345	099A0347OM3	099A0347OM4
4	LC-Duplex	099A0342	099A0344OM3	099A0344OM4
6	LC-Duplex	099A0340	099A0305OM3	099A0305OM3

Patch Location Rack:

Applications:

- High-density data center infrastructures
- For the construction of ultra-high-density data center patch locations

Properties:

- Innovative, restriction-free cable management system
- Rack pillars with integrated cable managers to prevent interference with cable routing
- The covers of the cable managers fold in both directions and are completely removable
- Individually selectable feedthroughs in the sides and rear walls of the large-volume cable channel for simple vertical and horizontal cable routing
- Professional routing of large cable volumes from the patchfields and storage of cable overlengths in the vertical cable managers
- Particularly suitable for fiber optic cables thanks to the use of cable clips (L-fingers) and finger slots:
 - The rounded L-fingers ensure that the cables are extremely well protected against bending and kinking even when subject to strain.
 - The L-fingers do not have any sharp edges and are extremely strong and resistant to breakage.
 - Because there is plenty of space for them in the large finger slots, the cables are neither squeezed nor kinked.
 - The L-fingers retain the cables in the finger slots whenever you need to work with the covers folded back or removed.
- Dimensions (H x L x W): 213 (46 HU) x 90 x 90 cm
- Material and color: Powder-coated steel, RAL 9005 (black)

Optional:

19" Intermediate Rack for the construction of rack rows with uneven numbers of racks on request

Delivery form:

- Factory-mounted on pallet (total height with pallet and packaging: 230 cm)
- Including adjustable feet for on-site installation

Accessories:

Wide range of accessories such as side walls, cable guides, excess cable storage for the top of the rack are available on request



More details in our
Product Information "DC-PLR"

About Rosenberger OSI:

Since 1991, Rosenberger Optical Solutions & Infrastructure (Rosenberger OSI) has been an expert in innovative fiber optic cabling infrastructure and service solutions for Data Centers, Local Networks, Telecom and Industrial.

The products and services can be found wherever largest amounts of data have to be transferred quickly and securely. In addition to the development and production of a broad portfolio of fiber optic and copper cabling systems, Rosenberger OSI also offers a variety of services such as planning, installation and maintenance of cabling infrastructure. Rosenberger OSI has been a part of the globally operating Rosenberger Group since 1998, a worldwide leading provider of high-frequency-, high-voltage-, and fiber-optic-connection solutions headquartered in Germany.

For further information, please visit: www.rosenberger.com/osi

Rosenberger

Rosenberger-OSI GmbH & Co. OHG

Optical Solutions & Infrastructure | Endorferstr. 6 | 86167 Augsburg | GERMANY | Telephone: +49 821 24924-0
info-osi@rosenberger.com | www.rosenberger.com/osi

Rosenberger® is a registered trademark of Rosenberger Hochfrequenztechnik GmbH & Co. KG. All rights reserved. © Rosenberger 2018

For technical reasons, we reserve us the right to make any deviations from the illustrations in the product information.
Transfer to third party only by authority of Rosenberger-OSI GmbH & Co. OHG- All rights reserved.

Creation date: 2017-03-30
Valid since: 2019-07-11
Revision: 007