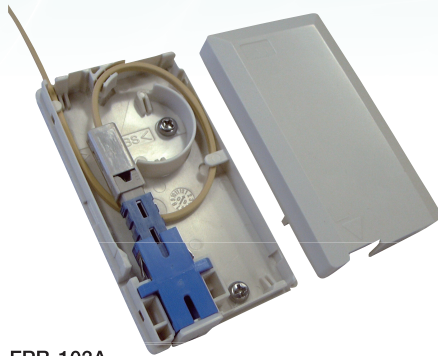
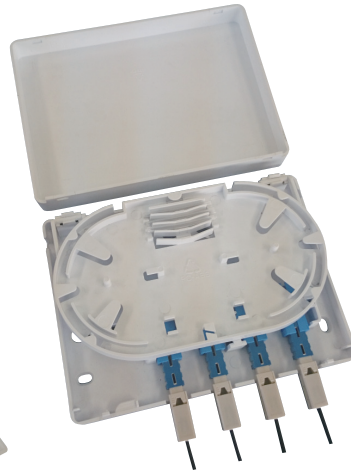


## User Home Application

# Optical Outlet FPB-103A, FPB-401 Series



FPB-103A



FPB-401-4C



FPB-401-1/2C

## Features & Benefits

- Indoor wall mountable outlet with 1/2/4 SC port(s)
- Compact and light weight
- Cable entry from any of 4 directions is possible to enable flexible cabling

## Applications

- FTTH MDU and SDU indoor installation
- Embedded wall application application

## Specifications

Item		FPB-103A	FPB-401-1C	FPB-401-2C	FPB-401-4C
Cable Input	Cable Type	Standard flat drop cable/low friction cable			
	Capacity	1	1	1	1
Cable Output	Cable Type	Bend-insensitive patchcord			
	Capacity	1	1	2	4
Number of Connection/SC Adapter		1	1	2	4
Connection Type*		Connector	Connector or pigtail splicing*		
Main Body		PC+HIPS	ABS		
Color		Light Gray	White	White	Light gray
Dimensions (H × W × D mm)		H93 × W50 × D18	H86 × W86 × D27	H86 × W86 × D27	H150 × W110 × D33
Weight (Kg)		Approx. 0.1	Approx. 0.07	Approx. 0.07	Approx. 0.1

\*Please contact us for SC/APC type.

## Ordering Information

#	Model Number	Description
1	FPB-103A	Optical outlet 1pc, SC adapter 1pc, accessory kit 1 set, assembly manual
2	FPB-401-1C	Optical outlet 1pc, SC adapter 1pc, accessory kit 1 set, assembly manual
3	FPB-401-2C	Optical outlet 1pc, SC adapter 2pc, accessory kit 1 set, assembly manual
4	FPB-401-4C	Optical outlet 1pc, SC adapter 4pc, accessory kit 1 set, assembly manual

## Option

Item	Description
Connector	Field installable connector
Patch cord	Bend-insensitive fiber patch cord