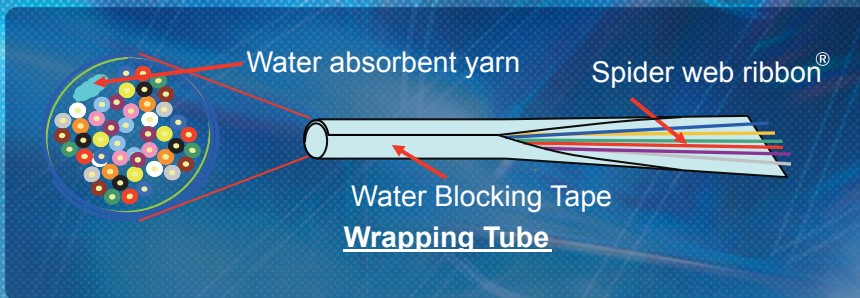


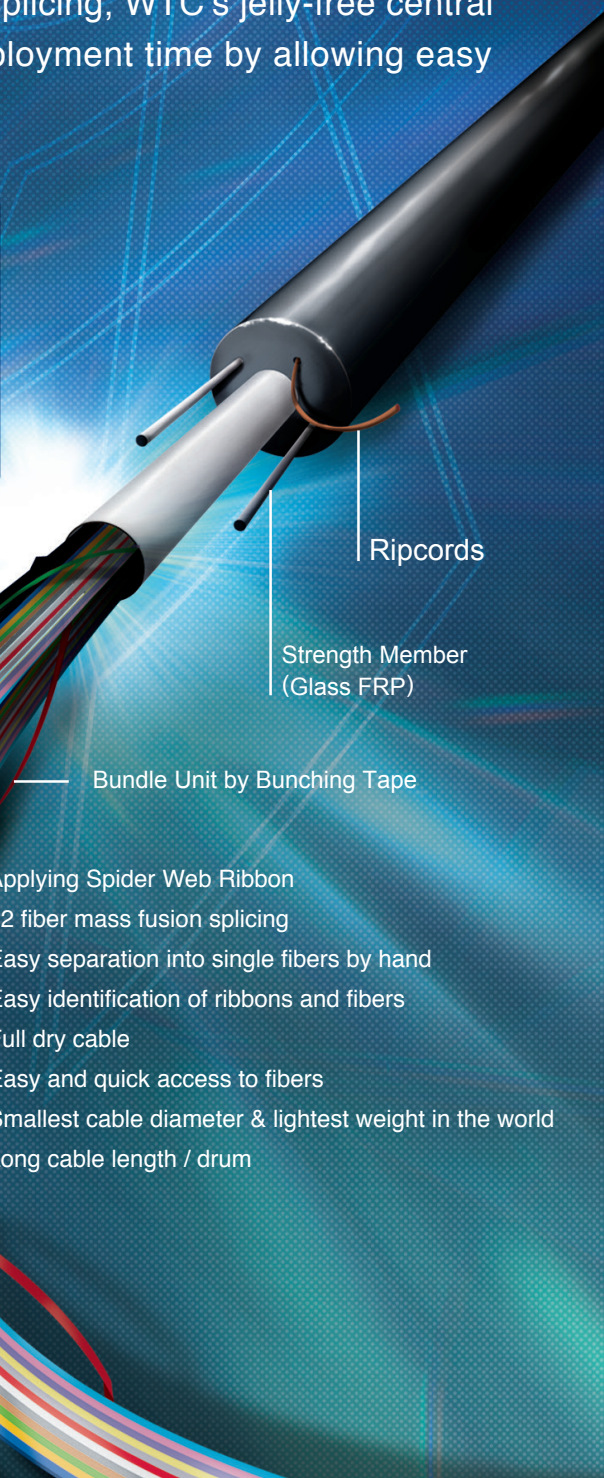
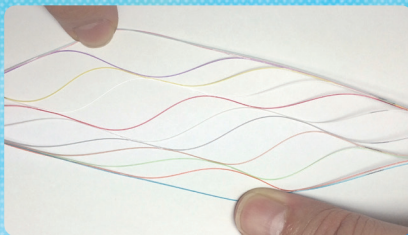
# Wrapping Tube Cable with Spider Web Ribbon®

288-3456F Ribbon Full Dry Central Core Cable

Fujikura has developed industry-changing ribbonized optical fiber product called Spider Web Ribbon® (SWR). This product allows 12 fiber mass fusion splicing as well as drastically reduces cable outer diameter and weight. Applying SWR, totally unique features of optical cable called wrapping tube cable (WTC) are now released for 288 - 3456 fibers inside. In addition to 12 fiber mass fusion splicing, WTC's jelly-free central fiber core construction significantly reduces cable deployment time by allowing easy access to fibers and eliminating jelly cleaning time.



## Spider Web Ribbon® with Ringmarking



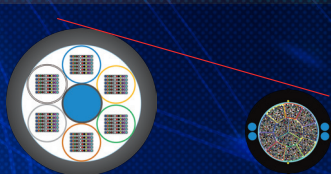
- Applying Spider Web Ribbon
- 12 fiber mass fusion splicing
- Easy separation into single fibers by hand
- Easy identification of ribbons and fibers
- Full dry cable
- Easy and quick access to fibers
- Smallest cable diameter & lightest weight in the world
- Long cable length / drum

## Features

### Spider Web Ribbon



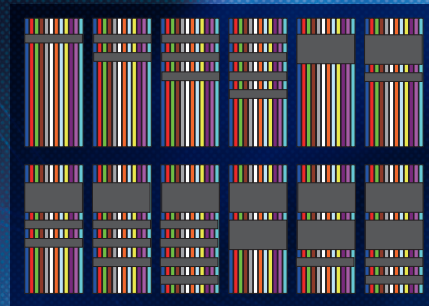
### High Fiber Packing Density



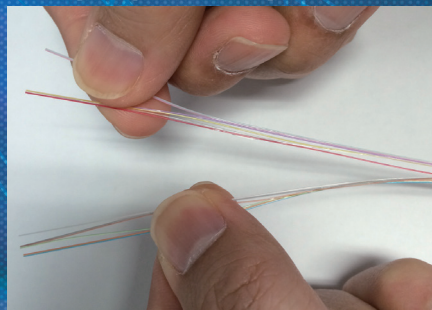
**864F Ribbon Loose Tube Cable**  
D = 27mm  
W = 440kg/km

**864F Wrapping Tube Cable**  
D = 17.5mm  
W = 215kg/km

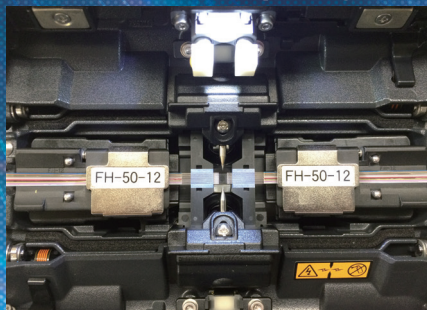
### Stripe Ring Marking



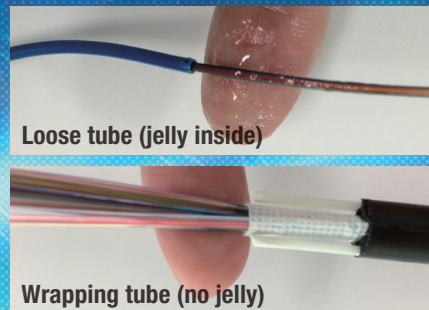
### Easily separable by hand



### 12F mass fusion splicing



### Full Dry Structure



## Specification

Item		Specification						
Optical Fibers		ITU-T G652.D and G.657.A1						
Reference Standard		Telcordia GR-20						
Cable Type		288	432	576	864	1152	1728	3456
Cable diameter (mm)		12.0	13.5	15.0	17.5	18.5	23.0	30.5
Cable weight (kg/km)		105	135	165	215	240	360	600
Tensile strength (N)	Installation	2700						
	Permanent	810						
Minimum bending radius (mm)	Cyclic Flexing	120	135	150	175	185	230	300
	Cable Bend	180	202	225	262	277	345	450
Crush (N/100mm)		2200						
Impact (Nm)		4.4						
Installation Temperature (°C)		-30 to +60						
Operation Temperature (°C)		-40 to +70						
Storage & Transportation Temperature (°C)		-40 to +70						
Water Penetration		No water detected at unsealed end						

\* Specification may change without prior notice

## Fujikura Ltd. Head Office

1-5-1 Kiba, Koto-ku, Tokyo, Japan 135-8512  
+81-3-5606-1206

Mail : [opticalcable@jp.fujikura.com](mailto:opticalcable@jp.fujikura.com)  
<http://www.fujikura.co.jp/eng/>

Copyright © 2017 Fujikura Ltd. All Rights Reserved.  
182 · 20-0804-182 · 20-00

Asia : Fujikura Asia Ltd. Tel: +65-6-271-1312 Fax: +65-6-271-0965 URL: <http://www.fujikura.com.sg>  
438A Alexandra Road, #08-03 Blk A Alexandra TechnoPark, SINGAPORE, 119967

Europe : Fujikura Europe Ltd. Tel: +44-20-8240-2000 Fax: +44-20-8240-2010 URL: <http://www.fujikura.co.uk>  
C51 Barwell Business Park, Leatherhead Road, Chessington, Surrey KT9 2NY, UK

Middle East / Africa : Middle East Representative Office Tel: +962-6-464-6994 Fax: +962-6-464-6994

Abunameh Business Center 5th floor, Office No. 54 3rd Circle, Jabal Amman, PO Box 2691, Amman 11181, Jordan

Russia / CIS : Representative Office in Moscow Tel: 7(495)980-7045 Fax: 7(495)980-7046 URL: <http://www.fujikura.su>  
Leninskiy pr-t, 45, office 450, Moscow, Russian 119334

Latin America : Fujikura Cabos Sao Paulo Tel: +55-11-3939-1249 URL: <http://renatorosa.com.br/fujikuracabos/>  
Rua Cel. Oscar Porto, 736, Sala 44, Paraiso - Sp, Sao Paulo, Brazil, Cep 04003-003