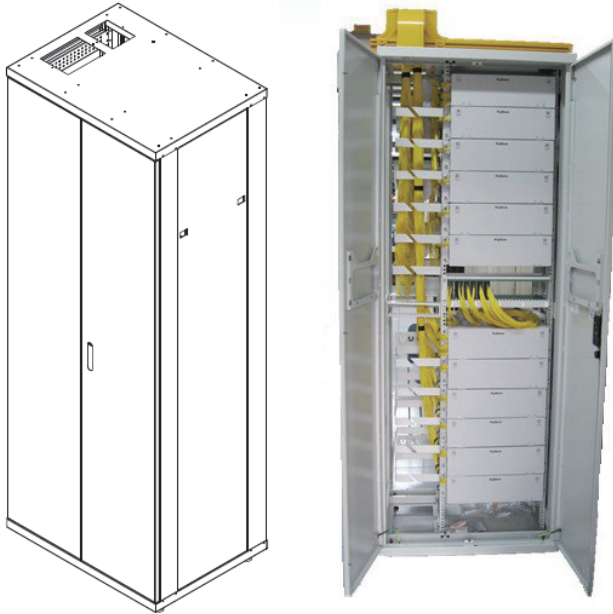


Central Office Application

FTM-1000C

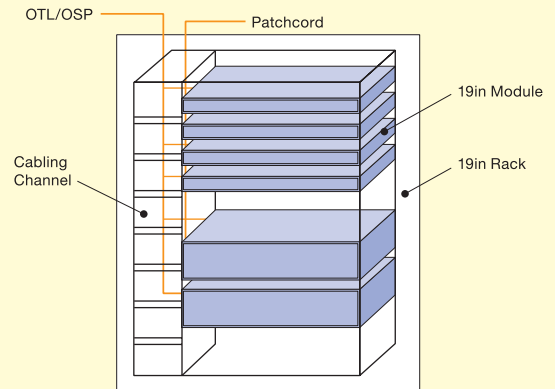


Features & Benefits

- Efficient termination, splicing of management of optical cables
- Up to 1000C cord organizing capacity and cascable
- EIA 19-inch standard rack with additional vertical space
- Removal side and back plates, easy access and maintenance
- Front door, comprise 2 doors left and right, easy access
- Abundant and flexible option units configuration
- Compatible with industry standard devices

Applications

- Central office, data center indoor applications
- Indoor



Specifications

Item	FTM-6822	FTM-6817	FTM-6812
Unit Height	46U	35U	23U
FDU-144C Capacity (pcs)	7	5	3
Cable Input	Number Capacity	21	15
	Outer Diameter (mm)	7~23	
Cable Output	Number Capacity*	1008	432
	Outer Diameter (mm)	2mm cord	
Main Body	Steel with coated; Light gray		
Dimension (H × W × D mm)	H2200 × W800 × D600	H1700 × W800 × D600	H1200 × W800 × D600
Weight (Kg)	Approx. 120	Approx. 92	Approx. 60

* Capacity is counted when FDU-144C termination units are used.

Ordering Information

#	Model #	Description
1	FTM-6822	FTM Rack (2200mm height), cable clamps, cord guides, accessory kit, assembly manual
2	FTM-6817	FTM Rack (1700mm height), cable clamps, cord guides, accessory kit, assembly manual
3	FTM-6812	FTM Rack (1200mm height), cable clamps, cord guides, accessory kit, assembly manual

* Please contact us for more information on different rack height and applicable options.