

Optical Splitter

FSC123 Series



Ordering Information

Product Code

FSC123-1 × X -SC / Y

Type of Splitter :

4 : 1 × 4 splitter
8 : 1 × 8 splitter
16 : 1 × 16 splitter
32 : 1 × 32 splitter

Type of Connector :

APC : Angled PC
UPC : UPC

Features & Benefits

- High optical performance
- Module design and easy installation
- Large operating temperature range

Applications

- FTTH optical splitting cabinets and closure
- Rack mount

Specifications

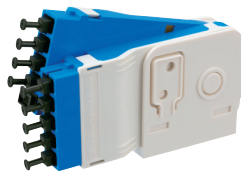
Item	1 × 4	1 × 8	1 × 16	1 × 32
Fiber	SM 10/125 fiber			
Operating Wavelength (nm)	1260~1650*			
Insertion Loss * (Without Connector, dB)	≤ 7.3	≤ 10.5	≤ 14.1	≤ 17.45
Insertion Loss * (With Connector, dB)	≤ 7.8	≤ 11.0	≤ 14.6	≤ 17.95
Uniformity (dB) **	≤ 2.0	≤ 1.0	≤ 1.5	≤ 2.0
PDL (dBp-p) **	≤ 0.3	≤ 0.3	≤ 0.3	≤ 0.4
Return Loss (dB)	≥ 50			
Directivity (dB) **	≥ 50			
Dimension (L × W × H mm)	L118.5 W100 H25		L118.5 W100 H50	L118.5 W100 H102

* same for UPC and APC polish, test wavelength 1310 & 1550nm ** Without connectors;

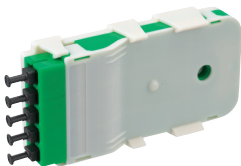
FSC114 splitter module



FSC114-1x4-SC/UPC



FSC114-1x8-SC/UPC



FSC114-1x4-SC/APC



FSC114-1x8-SC/APC

Ordering Information

Product Code

FSC114-1 × X -SC / Y

Type of Splitter :

4 : 1 × 4 splitter
8 : 1 × 8 splitter

Type of Connector :

APC : Angled PC
UPC : UPC

Features & Benefits

- Rotatable structure and easy plug
- Design for FTTH MDU solution
- Directly mounted to wall or elevator shaft
- Accommodated into termination boxes

Applications

- FTTH MDU application
- Wall mount or termination box accommodation

Specifications

Mechanical Characteristics

Vibration IEC61300-2-1	A = ±5mm, f = 10Hz, 1,000,000 Cy, No splice case degradation, No damage
Cable Torsion IEC61300-2-5	400mm, Maximum rotation 90°/maximum 50 Nm, 5 Cy/cable, No splice case degradation
Temperature Cycling IEC61300-2-22	-40°C~+20°C~+65°C, 8h/Cy 100Cy, No splice case degradation, No damage

Item	1 × 4	1 × 8
Fiber	SM 10/125 fiber	
Operating Wavelength (nm)	1260~1650	
Insertion Loss* (Without Connector, dB)	≤ 8.0	≤ 11.6
Uniformity(dB) **	≤ 2.0	≤ 1.0
Return Loss (dB)	≥ 50	
Dimension (L × W × H mm)	L105 W28.4 H55	L105 W35.1 H57

* same for UPC and APC polish, test wavelength 1310 & 1550nm ** Without connectors;